

# LB4

## Product Datasheet



Continuous Cast Leaded Bronze

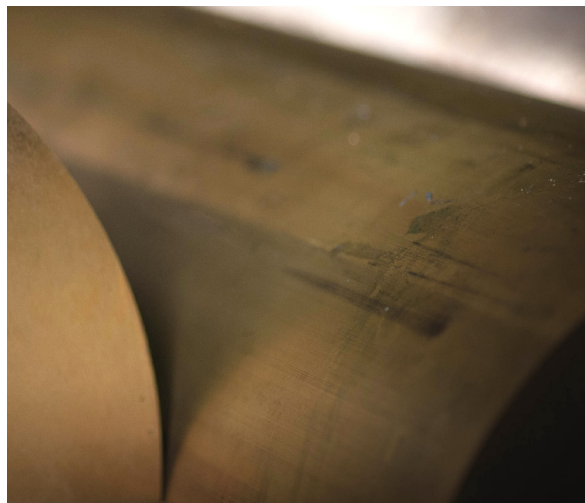
Service. Quality. Value.

### Moderate strength bearing alloy

#### LB4 is an ideal product for producing bearings for non-critical applications

Like LB2, LB4 is an ideal product for the production of bearings, particularly in environments where a general lack of lubrication and where alignment issues are present. This leaded bronze product contains approximately 5% tin and 9% lead. The alloy benefits from excellent machinability with medium strength and good corrosion resistance. LB4 is classed as a general bearing alloy with reasonable ductility which is suitable for use in non-critical applications under low loads.

The alloy is suitable for light load bearings, bushes, impellers and shafts.



#### Key Features

- Good machinability
- Good wear resistance
- Good corrosion resistance
- Medium strength
- Reasonable ductility

#### Applications

- Shafts
- Bushes
- Light load bearings
- Pump impellers
- Non-critical, low load applications

#### Chemical Composition (weight %)

	Cu	Sn	Zn	Pb	P	Ni	Sb	Fe	Others
Min		4.0		8.0					
Max	Rem	6.0	2.0	10.0	0.1	2.0	0.5	0.25	0.5

#### Mechanical Properties (continuous cast)

Ultimate Tensile Strength	0.2% Proof Strength	Elongation	Hardness (Brinell)
250 N/mm <sup>2</sup>	132 N/mm <sup>2</sup>	16%	70

LB2 is available in rod and bar.

#### UK Service Centres:

Smiths Belfast **02895 908 897**  
Smiths Biggleswade **01767 604 704**  
Smiths Birmingham **0121 728 4940**  
Smiths Bristol **0117 971 2800**  
Smiths Chelmsford **01245 466 664**  
Smiths Gateshead **0191 469 5428**  
Smiths Horsham **01403 261 981**

Smiths Leeds **0113 307 5167**  
Smiths Manchester **0161 794 8650**  
Smiths Norwich **01603 789 878**  
Smiths Nottingham **0115 925 4801**  
Smiths Redruth **01209 315 512**  
Smiths Verwood **01202 824 347**  
Main Office **0845 527 3331**

#### Quality & Testing:



[www.smithmetal.com](http://www.smithmetal.com) [info@smithmetal.com](mailto:info@smithmetal.com)

All information in our data sheet is based on approximate testing and is stated to the best of our knowledge and belief. It is presented apart from contractual obligations and does not constitute any guarantee of properties or of processing or application possibilities in individual cases. Our warranties and liabilities are stated exclusively in our terms of trading.